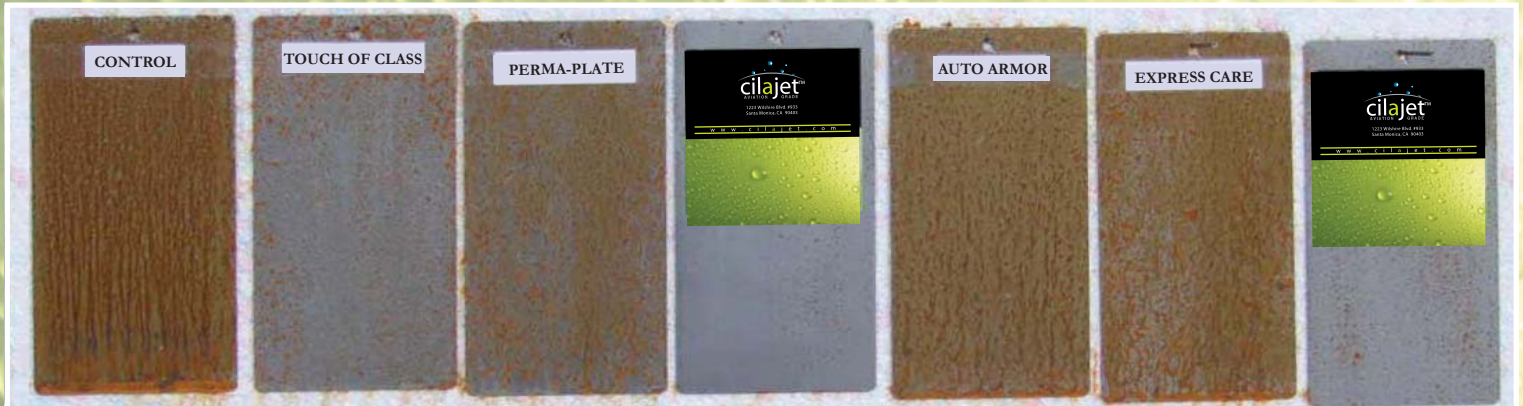


Tests Conducted February-March 2007
WHAT THE TEST RESULTS SHOW



The "CONTROL" panel is untreated steel. The other panels are treated with cilajet and each of the competitive "sealants". They are then exposed to a salt-water solution over a 4-hour period, and dried for at least 72 hours.



What these images illustrate are the initial stages of entropy. The darker the spots, the more severe the damage is to the substrate.